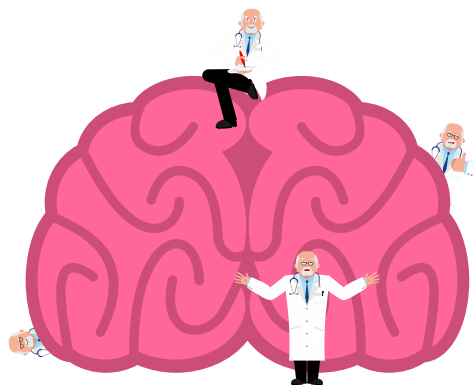


## SECTION 3

# PROFESSIONAL DEVELOPMENT



# Professional Development

Use the links below to jump to a specific section.

[No-Cost Training Options](#)

[Fee-Based Training Options](#)



We want to hear from you!  
Complete our short survey to let us know how we're doing.

# No-Cost Options

## Online Trainings

### **[Brain Links' YouTube Training Channel](#)**

Training playlists for specific groups and videos by topic ranging from 3 minute single resource clips to 90 minute sessions.

**Brain Links' collaborative [Tennessee Brighter Futures](#)** offers a series of infographics, resource pages and training about Brain Injury and Co-occurring needs. See Tennessee Brighter Futures' YouTube Playlist.

### **[Brain Injury Alliance of New Jersey](#)**

Topic specific videos, PowerPoint presentations, factsheets and printable resources.

### **[Brain Injury Association of North Carolina](#)**

Access recorded webinars and content and register for live webinars with topics including Powerful Tools for Caregivers, Brain Injury Support in Higher Education, and Adaptive Fitness.

### **[CDC HEADS UP Online Training for Healthcare Providers](#)**

Is now available on CDC Train! There are three different versions offered for clinicians, school health providers, (e.g. school nurses), and other allied health professionals. Sign up today and earn 2.0 Continuing Education Credits through the American Academy of Pediatrics.

### **[CDC HEADS UP to Youth Sports](#)**

A free, online course available to coaches, parents, sports officials, athletic trainers, and others helping to keep athletes safe from concussion.

### **[Centers for Disease Control ACES Training](#)**

ACES training. CDC Preventing Adverse Childhood Experiences Training Modules: We all have a role in preventing adverse childhood experiences—commonly known as ACEs. ACEs can affect children and families across all communities. Learn to Prevent ACEs: ACEs can impact kids' health and well-being. They can have long-term effects on adult health and wellness. Their consequences can affect families, communities, and even society. Thankfully, ACEs are preventable.



**We want to hear from you!**  
**Complete our short survey to let us know how we're doing.**

### **Center on Brain Injury Research and Training Webinars**

48+ one-hour recorded webinars over a broad range of topics including Screening for Brain Injury, TBI and Behavioral Health Challenges, Section 504 and Remote Learning, and The Role of the SLP in Multidisciplinary Concussion Management.

### **The NeuroRestorative Rehabilitation Learning Institute**

Offers monthly, one hour online CEU opportunities for brain injury rehabilitation professionals. The live presentations and recordings will be available to view for CE credit for Case Managers (CCMS), Social Workers (NASW), and Florida Board of Nursing (accepted in all states except AZ, NH, NC, OH). All other attendees will receive a general certificate of attendance.

#### **Interested in learning more?**

Visit Brain Links: [www.tndisability.org/brain](http://www.tndisability.org/brain)

TN TBI Program: <https://www.tn.gov/health/health-program-areas/fhw/vipp/tbi.html>

# Fee-Based Training

## [Brain Injury Association of America](#)

65+ recorded and ongoing registration for live webinars for caregivers, professionals on a variety of subjects. Receive a certificate for ACBIS (Academy of Certified Brain Injury Specialist) recorded webinars – cost ranges \$30-\$50 per one hour webinar.

## [Academy of Certified Brain Injury Specialists](#)

Developed by experienced clinicians and rehabilitation professionals, Brain Injury Fundamentals is an all-new training and certificate program designed to address the unique needs and challenges of those who care for or encounter individuals with brain injury. This includes non-licensed direct care staff persons, facility staff, family members and friends, first responders, and others in the community.

## [Neuropsychological Screening: Using Brain Injury and Cognitive Screening to Inform Treatment Planning Across Settings](#)

Become a NASHIA-Approved (National Association of State Head Injury Administrators) Neuropsychological Screener. Open to Masters-level clinicians, Social Workers, Vocational Rehabilitation Counselors, Addiction professionals, Community Rehabilitation programs, School staff, Evaluators, Mental health. \$150 for all three modules and certificate. \$150 for supervisors module and certificate. \$200/hr consultation hours for anyone.

## [OSU TBI-ID Method Training \(Screening for TBI\)](#)

The Ohio State University (OSU) Traumatic Brain Injury (TBI) Identification Method (OSU TBI-ID) is a standardized procedure for eliciting a person's lifetime history of TBI via a 3-5 minute structured interview. While not ideal for determining lifetime exposure to potentially damaging brain injury, self-report remains the gold standard for research and clinical use. The OSU TBI-ID has proven useful in many settings, including medical, mental health, substance abuse, domestic violence, corrections and aging. Health care and social service professionals need this tool to elicit a person's history of TBI.

## [Brainline's Glossary of Terms](#)

This glossary provides information and definitions of medical terms associated with brain injury and rehabilitation to help you or your family.



**We want to hear from you!**  
Complete our short survey to let us know how we're doing.

# Thank You!

---

## We're here to help

Our mission is to bring together professionals to recognize the far-reaching and unique nature of brain injury and to improve services for survivors. If we can help you, please feel free to reach out!



## Contact us:

[tbi@tndisability.org](mailto:tbi@tndisability.org)

## Check out our website:

[www.tndisability.org/brain](http://www.tndisability.org/brain)

## Follow us on social media:

