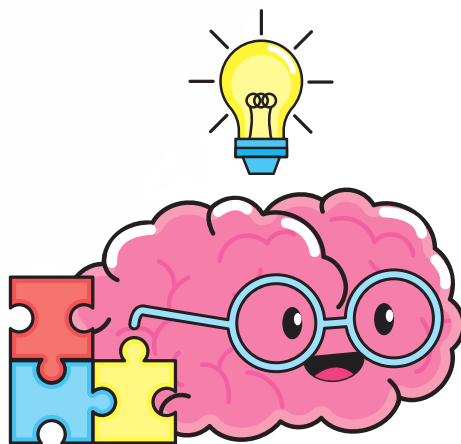


SECTION 4

BEHAVIOR

RESOURCES



Behavior Resources

Tennessee System of Care

"We help the child, youth, or young adult who: is between the ages of 0-21, is experiencing emotional or behavioral concerns that affect their daily life (i.e. having trouble in school, with their family, with peers or adults, with law enforcement, or children's services), is having difficulty or is at risk of psychiatric hospitalization, residential placement, or DCS custody, is willing and interested in participating (if under age 16, includes family)"



We want to hear from you!
Complete our short survey to let us know how we're doing.

Thank You!

We're here to help.

Our mission is to bring together professionals to recognize the far-reaching and unique nature of brain injury and to improve services for survivors. If we can help you, please feel free to reach out!



Contact us:

tbi@tndisability.org

Check out our website:

www.tndisability.org/brain

Follow us on social media:

